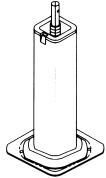
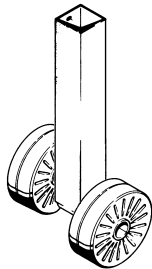


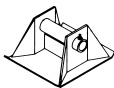
A400 Series Landing Legs Available in 14", 17", 19" Travel Standard outside flange mounting models



A400 G.14 10" x 10" Square pad cushion feet
 A400 G.17 10" x 10" Square pad cushion feet
 A400 G.3.17 10" x 10" Square pad cushion feet
 A400 G.19 10" x 10" Square pad cushion feet



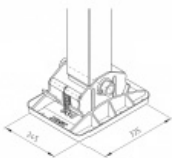
A400 R. 14 9" Diameter Standard Wheels
 A400 R. 17 9" Diameter Standard Wheels
 A400 R. 19 9" Diameter Standard Wheels



A400 T. 14 10" x 10" x 4.5" Sand Shoes (T Feet)
 A400 T. 17 10" x 10" x 4.5" Sand Shoes (T Feet)
 A400 T. 19 10" x 10" x 4.5" Sand Shoes (T Feet)



A400 A. 14 Air Suspension Feet
 A400 A. 17 Air Suspension Feet
 A400 A. 19 Air Suspension Feet



A400 C. 14 Compensating Feet
 A400 C. 17 Compensating Feet
 A400 C. 19 Compensating Feet



A.400. 14. W/F Supplied without Feet can take R.T. or A Feet
 A.400. 17. W/F Supplied without Feet can take R.T. or A Feet
 A.400. 19. W/F Supplied without Feet can take R.T. or A Feet

Inside flange mounting models₁

A401.R. 14", 17" or 19" Travel inside mount 9" diameter standard wheels
 A401.G. 14", 17" or 19" Travel inside mount 10 x 10 square pad cushion feet
 A401.T. 14", 17" or 19" Travel inside mount 10 x 10 x 4.5 Sand shoe (T.feet)



Load Capacities per pair

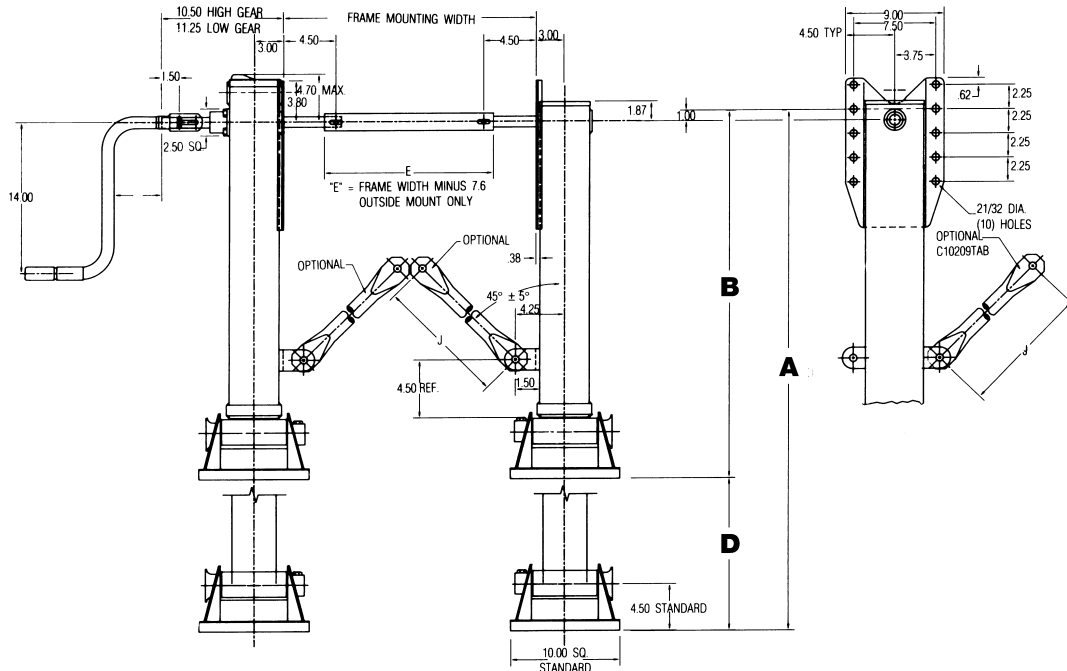
Lifting Capacity 25 tons
at 100 ft. lbs. input torque

Static Load Capacity 80 tons

Side Load Capacity 14.5 tons

Landing Gear Dimensions

Outside Mount2



Travel Option Dimensions

Model	D - Travel	A - Extended	B - Retracted
A400/A/G/T/R	14" (355.6mm)	42 ⁵ / ₈ " (1082.675mm)	28 ⁵ / ₈ " (727.075mm)
A400/A/G/T/R	17" (431.8mm)	48 ⁵ / ₈ " (1235.075mm)	31 ⁵ / ₈ " (803.275mm)
A400/A/G/T/R	19" (482.6mm)	52 ⁵ / ₈ " (1366.675mm)	33 ⁵ / ₈ " (854.075mm)
A400G3-17	17" (431.8mm)	45 ⁵ / ₈ " (1158.875mm)	28 ⁵ / ₈ " (727.075mm)

INDIVIDUAL COMPONENTS

Item	Description	Qty.	Part No.	Item	Description	Qty.	Part No.
6	Standard Crank w/Hardware 17 ^{3/4"}	1	C10592.4	36	Output Cluster Shaft	1	B10236
7	Crank Hanger	1	B10261	37	Output Cluster Gear	1	C10234
10	Brace Lug - W	2	C10108	38	Input Gear Shaft	1	C10233
11	Intermediate Cross Shaft	1	B10066	39	Output Spur Gear	1	C10078
12	Cover Screw	4	A10059.1	40	Input Spur Gear	1	C10085
13	Cover - 2 Speed	1	C10217	41	Detent Spring	1	A10049
14	Cover - 1 Speed	1	C10259	42	Detent Ball	2	A10048
15	Pinion Gear	1	C10177	43	Shift Housing incl.31,32	1	B10229*
16	Bevel Gear	2	C10155		Shift Housing incl.41,42	1	B10229-S
17	Pinion Shaft - 1 Speed	1	B10130	44	Shift Housing Bolt	4	A10230
18	Thrust Washer	2	A10102	45	Self Locking Nut	4	A10038.6
19	Grooved Pin	2	A10052.3	46a	Shoe - 10" x 10" x 4 1/2" Standard	2	C10035
20	Spacer Washer	2	A10218	46b	Low Profile T Foot	2	C10135
21	Grease Fitting	4	A10040	47	Shoe Axle	2	B10036
22	Grease Seal	1	A10283	48	Hex Head Bolt	2	A10037.3
24	Self Locking Nut	4	A10038.7	49	Roll Pin - 1/4" x 1/4"	1	A10054.6
25	Cross Shaft Bolt - 3/8" x 2" Gr5	2	A10037.1	50	9" Dia Standard Wheel	4	C10342
26	Thrust Bearing	2	A10033	51	Wheel Axle	2	B10300
27	Collar	2	A10101	52a	Air Suspension foot (pressed type)	2	C10994
28	Output Shaft	1	A10212	52b	Air Suspension foot (fabricated)	2	C10000
30	Bushing	2	A10255	53	Axle for pressed air foot	2	B10036.1
33	Roll Pin - 3/8" x 1 1/2"	1	A10054.3	54	Compensating foot	2	C20000
34	Spiral Pin	2	A10260.1	55	Axle for compl. foot	2	B10036.1
35	Roll Pin - 3/8" x 1 3/4"	1	A10054.7				

*Not Available as single item, included in part number 43

COMPONENT ASSEMBLIES

Item	Description	14" Travel	Part No.	17" Travel	19" Travel
3	Inner Leg Assy. - Standard	C10140.1	C10140.2	C10140.3	
4	Inner Leg Assy. - 10" Cushion	C10146.1	C10146.2	C10146.3	

FOOTWEAR OPTIONS

Description	Order Code	Description	Order Code
10" x 10" Cushion Foot	G	Compensating foot	C
9" Dia. Standard Wheels	R	10" x 10" x 4 1/2" Sand Shoes	T
Air Suspension	S	Low Profile T	T1

