

Hyva Floor

JOST

TRANSPORT EQUIPMENT



Hyva moves your world

Hydraulic Floor Systems

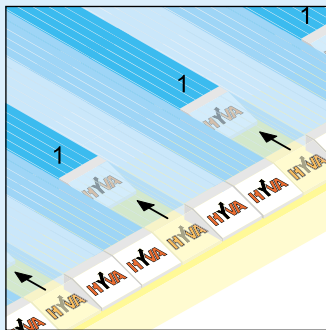
All over the world Hyva is well known for its tipping gears. But for some applications the principle of horizontal loading and unloading is preferred. This is the reason Hyva acquired the company Hydraulic Floor Systems and developed the Hyva Floor in 1991. Hyva offers you the best solutions when it comes to loading and unloading of vehicles.



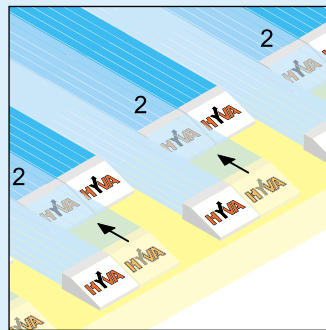
How the system works:

(A Hyva Floor discharging is shown.)

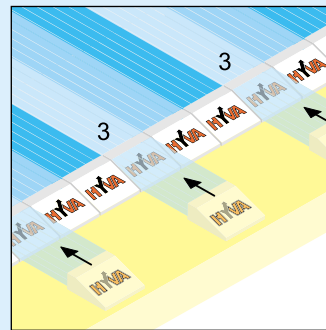
The Hyva Floor simply exploits the natural laws of friction. The standard floor is replaced by aluminium planks customised to the length of the vehicle. These planks are driven by three powerful hydraulic cylinders, in a four phase cycle:



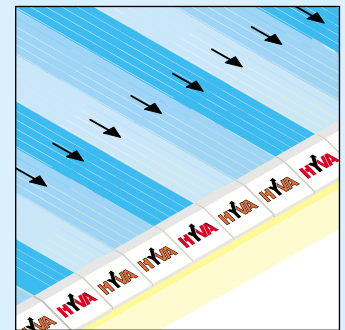
Phase 1 - The first of every 3 planks is shifted. The load does not move.



Phase 2 - The second of every 3 planks is shifted. Again the load does not move.



Phase 3 - Now only the remaining planks are shifted, and again the load does not move.



Phase 4 - All planks are moved in the opposite direction at the same time and the load moves.

Advantages of horizontal (un-) loading with HFS.

- No danger of vehicle turnover whatever the condition of the terrain and windforce.
- The tractor & trailer do not have to be in line to achieve sufficient stability.
- Ideal for high volume low weight bulk materials due to compression effect (up to 30 %).
- Up to 100 m³ of compacted bulk material can be transported
- It can operate inside low ceiling warehouses and transfer stations.



Advantages in comparison to a push out trailer.

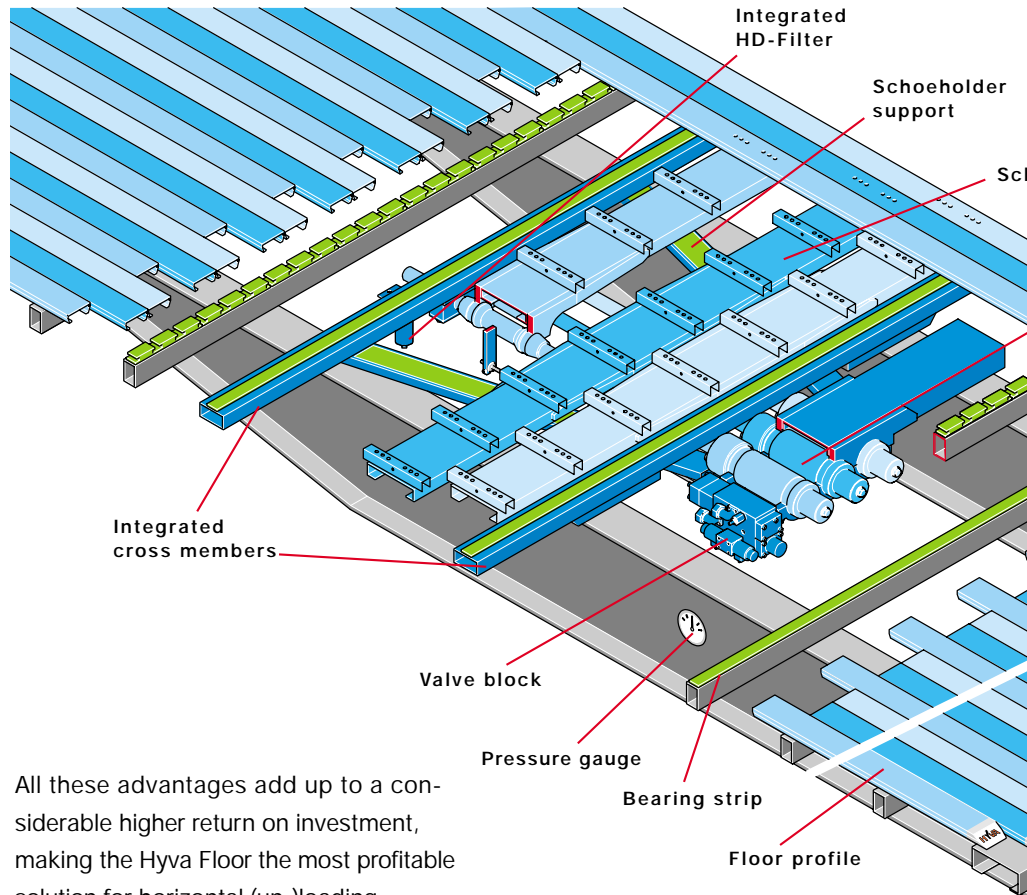
- Transport companies can be of service to more and more customers since the same vehicle can transport bulk material one way, while the transport of palletised goods can be arranged for the back haul.



(HFS)



- The unit weight is considerably lighter, since no reinforced body-work is required more payload can be hauled.
- Lack of push blade increases loading volume (approx. 17 %).
- When partitions (that move with the cargo) are used, combined transport of several different materials is possible.
- No roller bearings, chains or other vulnerable parts to be greased frequently.
- The Hyva Floor protects the trailer chassis from stress and shock loads. The special planks, extruded from aluminium alloy ensure a long working life.



All these advantages add up to a considerable higher return on investment, making the Hyva Floor the most profitable solution for horizontal (un-)loading.

Advantages of the Hyva Floor.

- Maximum reliability due to our advanced design, which also keeps dead weight to a minimum. All valves are combined in one block to achieve a high hydraulic efficiency.
- The small number of parts makes installation simple; no special tools are required!
- Single unit construction ensures quick and easy installation. Depending on your production process up to 10 hours installation time can be saved. All units have 2 integrated cross members, remote control and a high pressure filter.
- The weight of a Hyva Floor trailer hardly exceeds the weight of a regular trailer. Ask your agent for the weight for your specific application.
- A 13 metre (100 m³) long trailer can be discharged with an accurately controlled speed within 7 minutes.

HFS is successfully used for:

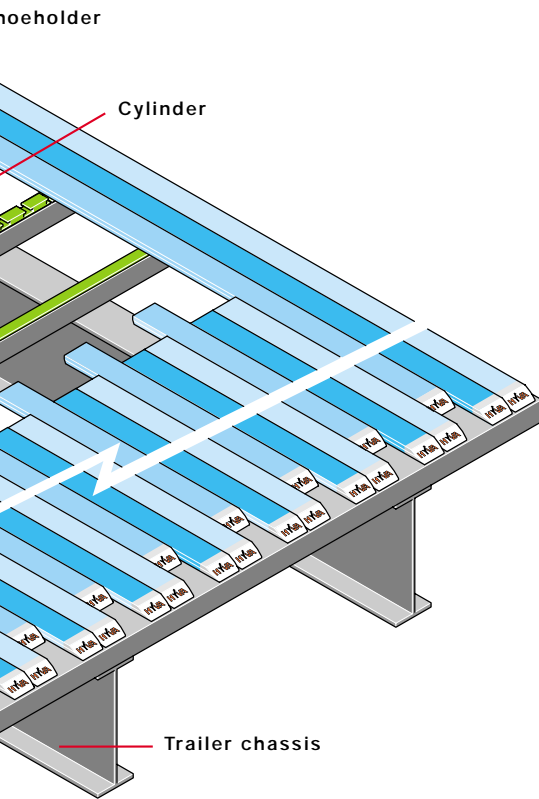
Refuse:	Municipal waste	Mixed
	Waste paper	Demolition
	Cans	Wet, dry
Agriculture:	Compost	Potatoes
	Manure	Hay
Other industries:	Coal	Wood
	Saw dust	Bales

The Hyva Floor can be used for practically all goods that might damage the planks or seals. If in doubt...

- The drive unit is mounted underneath the trailer; so no volume is wasted. No alterations are required for mounting the system in a trailer with a 80 mm cross member height.
- Thanks to Hyva's world wide service network you can offer your customer after sales service wherever the trailer is put to work.



Mechanical drive unit MS 150-III with Pr-2 floor profiles.



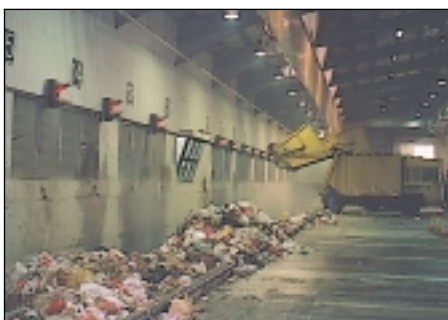
Efficiency in transport

3 batches of 4 mtr long carpets are loaded and transported one way, while cereals are transported on the back haul. Also baled goods, paper rolls, pallets and other goods can be loaded easily to make the back haul ever so efficient. Partitions can be used to separate bulk cargo. This enables you to deliver various materials to different addresses on the same trip.



- | | |
|----------------------|------------------------|
| and recyclables | Scrap material |
| destruction debris | Tyres |
| wet soggy refuse | Medical waste |
| stones | Cereals |
| straw & hay | Animal feed |
| wood chips | Palletised goods |
| bulk or bagged goods | Carpet or paper rolls. |

goods and material types. Beware of materials that may not be suitable. For more information, please contact one of our offices.



Stationary applications:

It was a logical step for the principle of Hyva Floor on refuse trailers to be applied to the movement of waste into transfer stations. Hyva Floors in wear-resistant steel for heavy duty applications are serving the requirements of recycling projects and waste transfer stations all over the world, 24 hours a day, 365 days a year. With HFS the irregular supply of material is transferred in a steady flow into the processing plant. Stationary Hyva Floor is the installation you can depend upon.

HOW to order:

Determine the required scope of supply making use of the listed partnumbers. If in doubt write down your specific application and fax this to Hyva. We will contact you as soon as possible to give you all necessary technical assistance and to make you a quotation.

Drive unit	HFS ref.	Description	Height cross members
MS150-III	89700000	Mechanical 150 mm	min. 80 mm
MS150-III CM80	89700001	Mechanical 150 mm CM-80 PR-1	min. 80 mm
MS150-HD	89000012	Mechanical 150 mm Heavy Duty	min. 80 mm
ES250	89000011	Electrical 250 mm	min. 80 mm

All units are supplied with 2 integrated cross members, remote control and a pressure filter.

The units are fully assembled and tested. Detailed mounting and operation instructions are included with each delivery.

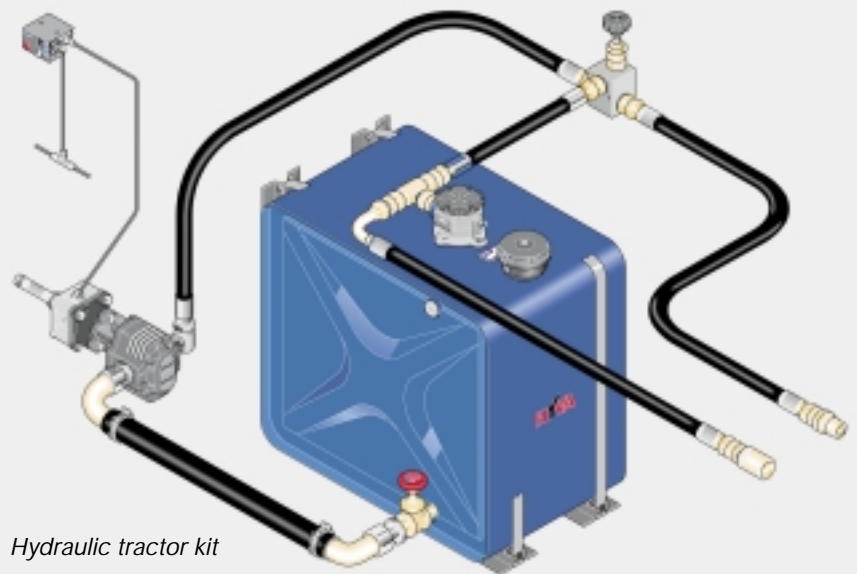
Profiles	HFS ref.	Description	Length
PR-1 4.5 mm	8903....	Box profile supported 4.5 mm	(on request)
PR-1 6.0 mm	8910....	Box profile supported 6.0 mm	(on request)
PR-2 5.0 mm	8801....	Cross member supported 10.0 mm	(on request)
PR-2 6.0 mm	8911....	Cross member supported 6.0 mm	(on request)
PR-2 9.0 mm	8913....	Cross member supported 10.0 mm	(on request)

The reference for ordering is put together by the HFS ref. followed by the profile length in cm. (4 digits). Profile width is 97.0 mm. Depending on the required time of delivery the profiles can be supplied cut to length. Not all profiles are listed.

Extras	HFS ref.
Seal per roll	89600040
Pop rivets seal	89600064
Bolts for profiles	36041006
Bearing supports PR-1	89150006
End stops PR-1	89150063
Strip PR-2 machined	89600011
Strip PR-2 flat	89600012
End stops PR-2	89600030

For technical details please contact your Hyva agent.

Due to the specific way of building the moving floor trailer we appreciate close contact with the body builder to make sure he exploits all advantages.



Hydraulic tractor kit

Example:

The vehicle is used for transporting potting soil and 30 tons of pallets on the back haul. The length of the trailer is 13.5 metres with 2.4 metres internal width. The cross member height is 100 mm. For this application 25 pcs. 6 mm profiles PR-2 can be used. The standard unit can be used for 100 mm cross members.

The required kit is: PR-2 (6 mm) Length = 13.500 - 0.250 (stroke + door thickness + free space) = 13.250 metres

25 pcs for a 2.4 metres trailer		25 x 89111325
Drive unit MS150-III		1 x 89700000
Number of cross members is 30;	Glide material machined: 10 x 8 =	80 x 89600011
	Glide material flat: 20 x 8 =	160 x 89600012
For this application 25 end stops are required		25 x 89600030



PR1



PR2

World wide after sales service

Hyva has over 15 subsidiaries and an extensive world wide dealer network so your customer can count on our after sales service wherever the vehicle is put to work. Our long term experience in hydraulics is at your disposal.



Drive unit MS 150-III including 2 integrated cross members with shoe holder supports.



Scope of supply contains high pressure filter with indicator, pressure gauge and a controlbox with remote control.

Technical information

Number of driven planks	24 x 97,0 mm
Electrical power	24 V (DC) - 1,2 A
Max. working pressure	200 Bar
Max. pump flow	110 l/min
Pressure filter	Integrated 25µm
Tankcapacity	Min. 110 ltr
Hydraulic connections	1" BSP return 3/4" BSP high pressure

Hyva optionally supplies the complete hydraulic tractor wet kit to drive the system or a power pack for disconnected trailers in transfer stations.

JOST TRANSPORT EQUIPMENT

2 Ossewa Street, Chloorkop, Kempton Park

P.O. Box 17725, Norkem Park, 1631

Phone - 0861 467 463, Fax - 0861 467 329

e-mail - info@jost.co.za