

POMPE A PISTONI AD ASSE INCLINATO BENT AXIS PISTON PUMPS

CODICE FAMIGLIA
FAMILY CODE

108-015/915
108-016/916
108-907

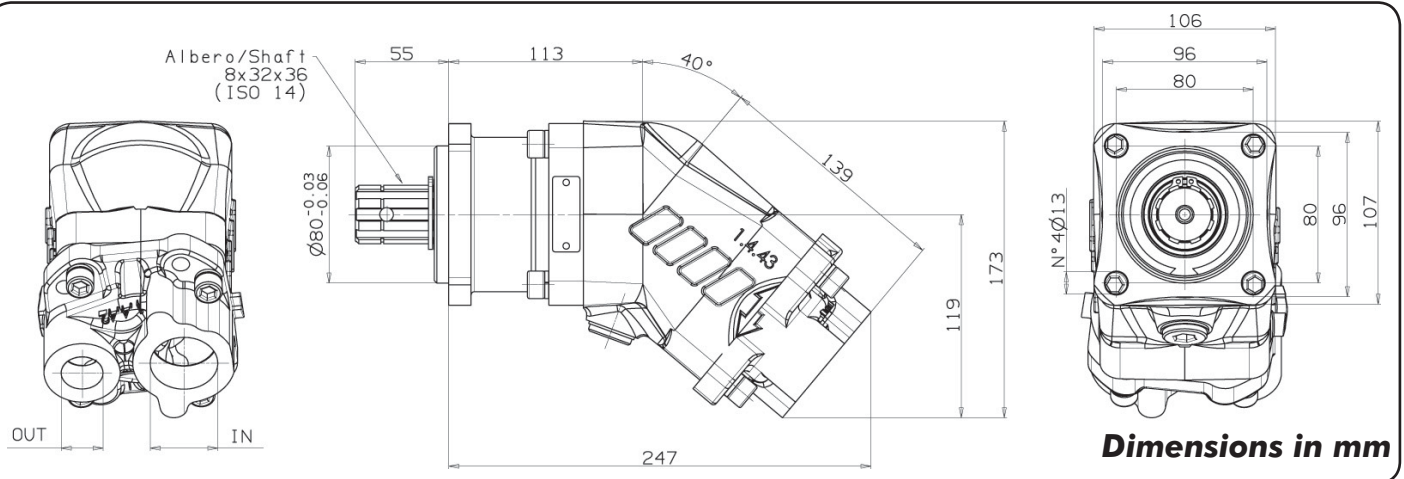
"HDS" 47-55-64
"MDS" 80

Codice foglio: 997-108-01515 Rev: AF



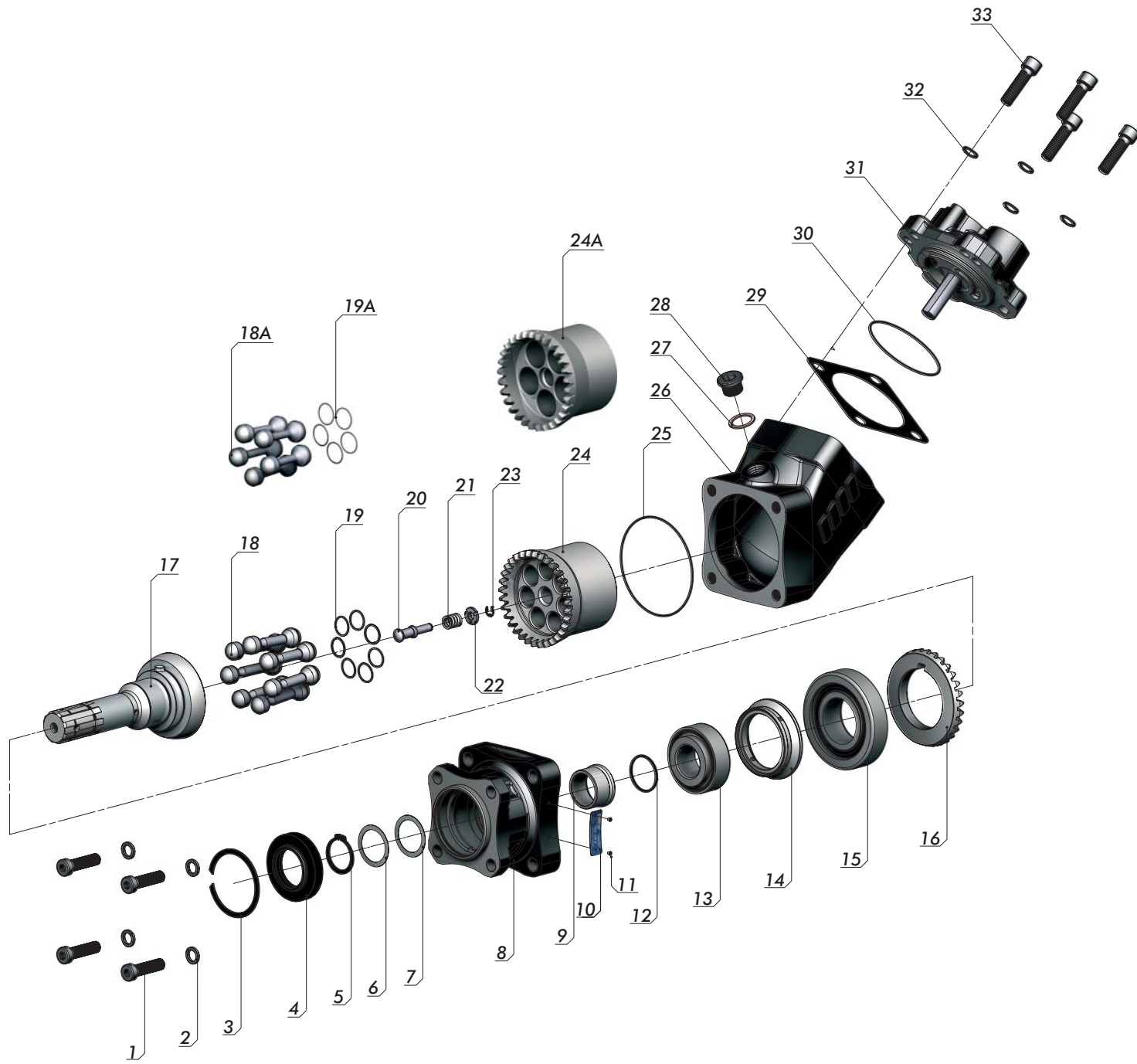
Fluido idraulico Fluid	Minerale o sintetico compatibile con guarnizioni: Mineral or synthetic compatible with the following seals: FKM, FPM, HNBR				
Viscosità cinematica consigliata Kinematic viscosity suggested	T media ambiente (°C) Average ambient temp. (°C)	< -40	-40 ÷ 10	10 ÷ 35	> 35
	VG (cSt = mm ² /s)	16	22	32	46
Viscosità cinematica ottimale di esercizio Optimale kinematic viscosity		VG = 10 cSt ÷ 100 cSt			
Viscosità cinematica max consentita all'avviamento Max kinematic viscosity suggested at the start-up		VG = 750 cSt			
Indice di viscosità consigliato Viscosity index suggested		VI > 100			
Grado di filtrazione Oil filtering		> 200 bar: 10 µm < 200 bar: 25 µm			
Pres. di aspirazione Inlet pressure		0,85 ÷ 2 bar assoluti/absolut			
Senso di rotazione Pump rotation		Unidirezionale (Dx o Sx) Unidirectional (Right or Left)			
Verificare che la pompa sia posizionata almeno 100 mm sotto il livello minimo del serbatoio olio. Prima di avviare la pompa effettuare spurgo aria. Verify that pump is, at least, 100 mm under the minimum level of the tank. Before starting the pump bleed the air.					

Codice fascicolo: 997-400-10810 Rev: AN



Data: Giovedì 2 novembre 2006

Tipo pompa Pump type	Rotazione Rotation		IN ISO 228	OUT ISO 228	IN SAE 20	OUT SAE 12	Temp. di funzionamento Working temperature	
	Destra Right	Sinistra Left					min	max
HDS-47	108-015-04733	108-015-04742	G 1 1/4	G 3/4			-15°C	200°C
	108-915-04734	108-915-04743					-40°C	140°C
	108-907-00470	108-907-00489					-15°C	200°C
HDS-55	108-015-05536	108-015-05545	G 1 1/4	G 3/4			-15°C	200°C
	108-915-05537	108-915-05546					-40°C	140°C
	108-907-00550	108-907-00569					-15°C	200°C
HDS-64	108-015-06035	108-015-06044	G 1 1/4	G 3/4			-15°C	200°C
	108-915-06036	108-915-06045					-40°C	140°C
	108-907-00649	108-907-00658					-15°C	200°C
MDS-80	108-016-00807	108-016-00816	G 1 1/4	G 3/4			-15°C	200°C
	108-916-00808	108-916-00817					-40°C	140°C
	108-907-00809	108-907-00818					-15°C	200°C



COMPANY
WITH QUALITY SYSTEM
CERTIFIED BY DNV
ISO 9001/2000

pag. 18
O.M.F.B. S.p.A. Hydraulic Components
We reserve the right to make any changes without notice.
Edition 2002.11 No reproduction, however partial, is permitted.
Via Cava, 7/9 25050 Pionopio d'Isco (Brescia) Italy Tel.: +39 030 9830611
Fax: +39 030 9839207-208 Internet: www.omfb.it e-mail: info@omfb.it





O.M.F.B. S.p.A. Hydraulic Components
 We reserve the right to make any changes without notice.
 Edition 2002.11 No reproduction, however partial, is permitted.
 Via Cove, 719 25050 Povoletto di/Isco (Brescia) Italy. Tel.: +39 030 9830611
 Fax: +39 030 9839207-208 Internet: www.omfb.it e-mail: info@omfb.it

pag. 19

COMPANY
 WITH QUALITY SYSTEM
 CERTIFIED BY DNV
 ISO 9001/2000

N° N°	HDS 47			HDS 55			HDS 64			MDS 80			Codice P. Number	Descrizione Description	Quantità Quantity	
	GAS	SAE	GAS -40°C	GAS	SAE	GAS -40°C	GAS	SAE	GAS -40°C	GAS	SAE	GAS -40°C				
1	•	•	•	•	•	•	•	•	•	•	•	•	502-004-00574	Vite TCE M 10x40	Socket head capscrew	4
2	•	•	•	•	•	•	•	•	•	•	•	•	501-008-00054	Rosetta elastica	Washer	4
3	•	•	•	•	•	•	•	•	•	•	•	•	501-000-02729	Anello elastico	Circlip	1
4	•	•	•	•	•	•	•	•	•	•	•	•	506-021-42726	Paraolio	Oil seal	1
													506-000-24272			
5	•	•	•	•	•	•	•	•	•	•	•	•	501-000-01355	Anello seeger rinforzato	Retaining ring	1
6	•	•	•	•	•	•	•	•	•	•	•	•	529-007-00217	Rondella	Washer	1
7	•	•	•	•	•	•	•	•	•	•	•	•	529-007-00226	Rondella	Washer	1
8	•	•	•	•	•	•	•	•	•	•	•	•	517-002-00637	Corpo anteriore	Front body	1
9	•	•	•	•	•	•	•	•	•	•	•	•	511-002-00200	Bussola	Bushing	1
10	•	•	•	•	•	•	•	•	•	•	•	•	513	Targhetta completa	Plate	1
11	•	•	•	•	•	•	•	•	•	•	•	•	513-000-00011	Chiodino fissaggio targhetta	Plate nail	2
12	•	•	•	•	•	•	•	•	•	•	•	•	506-006-03137	Guarnizione OR	O-ring	1
													506-000-13137			
13	•	•	•	•	•	•	•	•	•	•	•	•	510-002-00220	Cuscinetto	Bearing cone	1
14	•	•	•	•	•	•	•	•	•	•	•	•	530-004-00191	Anello distanziale cuscinetti	Bearing spacer ring	1
15	•	•	•	•	•	•	•	•	•	•	•	•	510-002-00275	Cuscinetto	Bearing cone	1
16	•	•	•	•	•	•	•	•	•	•	•	•	525-011-00139	Corona dentata	Crown	1
17	•	•	•	•	•	•	•	•	•	•	•	•	522-005-00231	Albero	Shaft	1
													522-005-00204			
18	•	•	•	•	•	•	•	•	•	•	•	•	532-005-00025	Pistone sferico	Piston	7
													532-005-00114			
													532-005-00016			
18a	•	•	•	•	•	•	•	•	•	•	•	•	532-005-00043			5
													501-023-00046			
19	•	•	•	•	•	•	•	•	•	•	•	•	501-023-00126	Fasce elastiche	Spring rings	21
													501-023-00019			
19a	•	•	•	•	•	•	•	•	•	•	•	•	501-023-00082			15
20	•	•	•	•	•	•	•	•	•	•	•	•	542-001-00162	Perno sferico con guida albero	Shaft guide pin	1
21	•	•	•	•	•	•	•	•	•	•	•	•	512-005-00812	Molla di carico corpo cilindri	Spring	1
22	•	•	•	•	•	•	•	•	•	•	•	•	542-001-00171	Anello guida molla	Spring guide ring	1
23	•	•	•	•	•	•	•	•	•	•	•	•	501-015-00028	Anello seeger	Retaining ring	1
													517-003-00109			
24	•	•	•	•	•	•	•	•	•	•	•	•	517-003-00181	Corpo cilindri sede pistoni	Piston barrel	1
													517-003-00074			
24a	•	•	•	•	•	•	•	•	•	•	•	•	517-003-00118			
25	•	•	•	•	•	•	•	•	•	•	•	•	506-006-03350	Guarnizione	Gasket	1
													506-000-13350			
26	•	•	•	•	•	•	•	•	•	•	•	•	517-002-00771	Corpo intermedio	Int. body	1
27	•	•	•	•	•	•	•	•	•	•	•	•	116-009-01200	Rondella rame	Copper washer	1
28	•	•	•	•	•	•	•	•	•	•	•	•	115-006-00135	Tappo cieco	Blank plug	1
29	•	•	•	•	•	•	•	•	•	•	•	•	507-000-00265	Guarnizione compensazione gioco	Backlash gasket	1
30	•	•	•	•	•	•	•	•	•	•	•	•	506-006-03275	Guarnizione OR	O-ring	1
													506-000-13275			
													517-002-00753			
													517-002-00824			
													517-002-01001			
31	•	•	•	•	•	•	•	•	•	•	•	•	517-002-01010	Corpo posteriore	Rear cover	1
													517-002-00762			
													517-002-00655			
													517-002-00815			
													517-002-00860			
32	•	•	•	•	•	•	•	•	•	•	•	•	501-008-00054	Rosetta elastica	Washer	4
33	•	•	•	•	•	•	•	•	•	•	•	•	502-004-00565	Vite TCE M10x35	Socket head capscrew M10x30	4

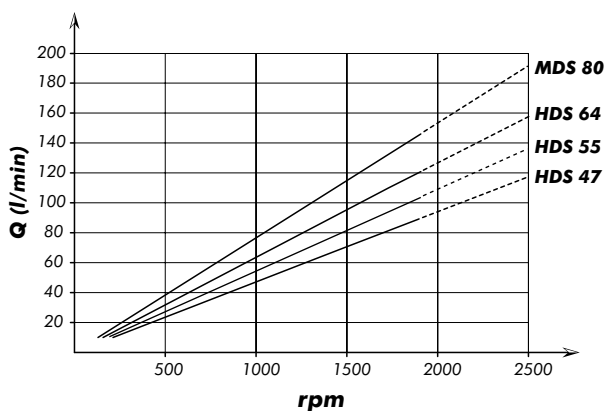
CARATTERISTICHE TECNICHE DI FUNZIONAMENTO

TECHNICAL FEATURES

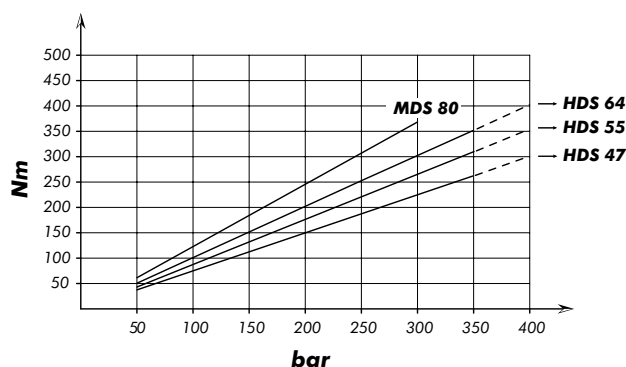
Tipo pompa Pump type	Cilindrata Displacement cm ³ /rev	Pressione Pressure			Velocità max. continua Max. continuous speed rpm	Velocità max. intermittente Max. intermittent speed rpm	Velocità min. Min. speed rpm	Peso Weight kg
		P1 bar	P2 bar	P3 bar				
HDS-47	47,13	350	370	400	1900	2500	300	12,6
HDS-55	56,7							
HDS-64	63,56							
MDS-80	77,25	300	300	300	1900	2500	300	

P1=Pressione max.continua Max. continuous pressure (100%)
P2=Pressione max. intermittente Max. Intermittent pressure (20 sec.max.)
P3=Pressione max. di punta Max. peak pressure (6 sec.max.)

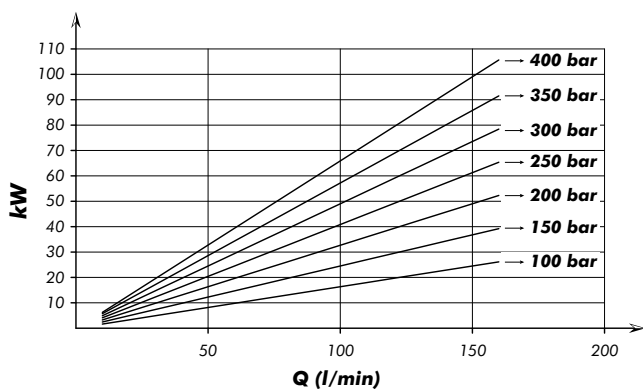
PORTATA FLOW



COPPIA ASSORBITA DRIVE TORQUE



POTENZA ASSORBITA POWER INPUT



SCELTA DEL TUBO DI ASPIRAZIONE HOW TO CHOOSE THE SUCTION PIPE SIZE

Q	Ø interno min. tubo Min pipe diam.		Velocità flusso Flow speed (m/s)
	mm	inch	
30	32	1" 1/4	0,62
40			0,83
50	38	1" 1/2	0,74
60			0,88
70	40	1" 9/16	0,93
80	45	1" 3/4	0,84
90			0,94
100	50	2"	0,85
110			0,93
120	60	2" 3/8	0,71
130			0,77
140			0,83
150			0,88
160	63	2" 1/2	0,86
170			0,91
180			0,96

Per garantire corrette condizioni di aspirazione la velocità del flusso non deve superare 1 m/sec.
To ensure the proper suction pipe size the flow speed should not exceed 1mt/sec.

Kit guarnizioni Seal Kit

GAS	108-903-47648
SAE	
GAS -40°	108-903-47657